

LEASE



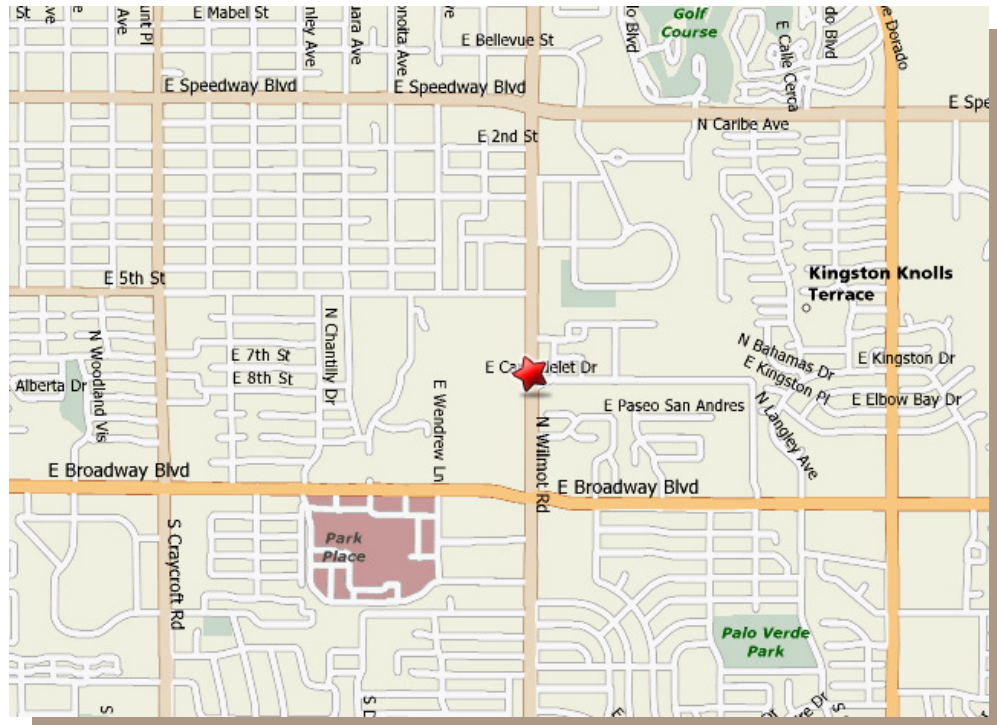
## 333-335 N. Wilmot National Bank Plaza

- **LOCATION:** Wilmot & Carondelet, between 5th Street and Broadway
  - **TOTAL SIZE:** 129,000±sf
  - **AVAILABLE SPACE:**

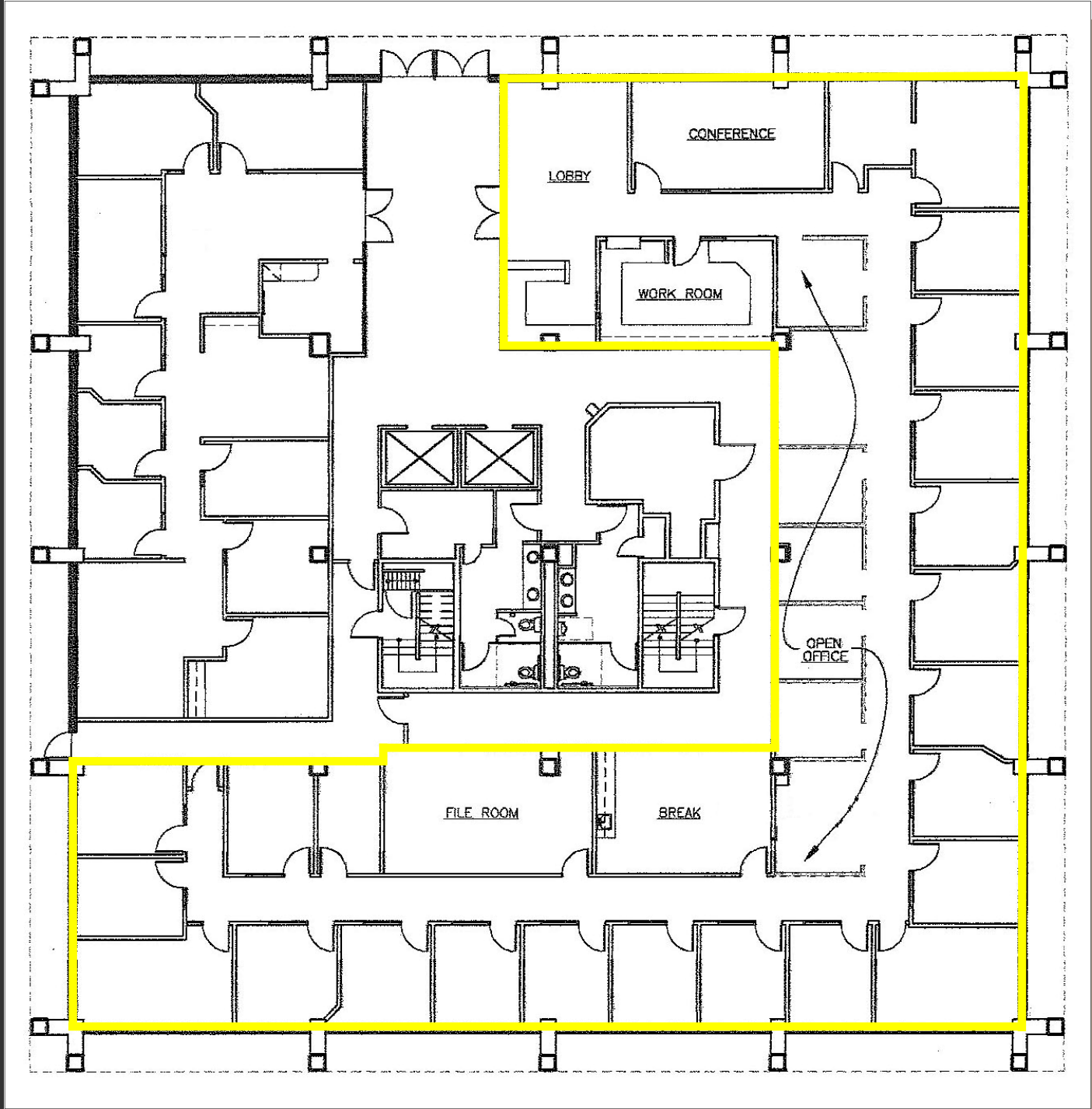
333 N. Wilmot	335 N. Wilmot
7,526 rsf - 1st floor	1,769 rsf - 4th floor
3,384 rsf - 2nd floor	3,994 rsf - 5th floor
  - **NUMBER OF STORIES:** 2 Buildings  
333 - 4 Stories  
335 - 6 Stories
  - **PARKING:** 1:200
- **COMMENTS:** Top 10 Tucson Office Building. Near Park Place Mall and Dorado Golf Course. Great access and views. On lighted corner. In-house Property Management and Maintenance. Building totally renovated in 2009.

### \$19.50/rsf/Full Service

Exclusively Represented by:  
**Mike Gross**  
Tucson Realty & Trust Co.  
520.577.7000

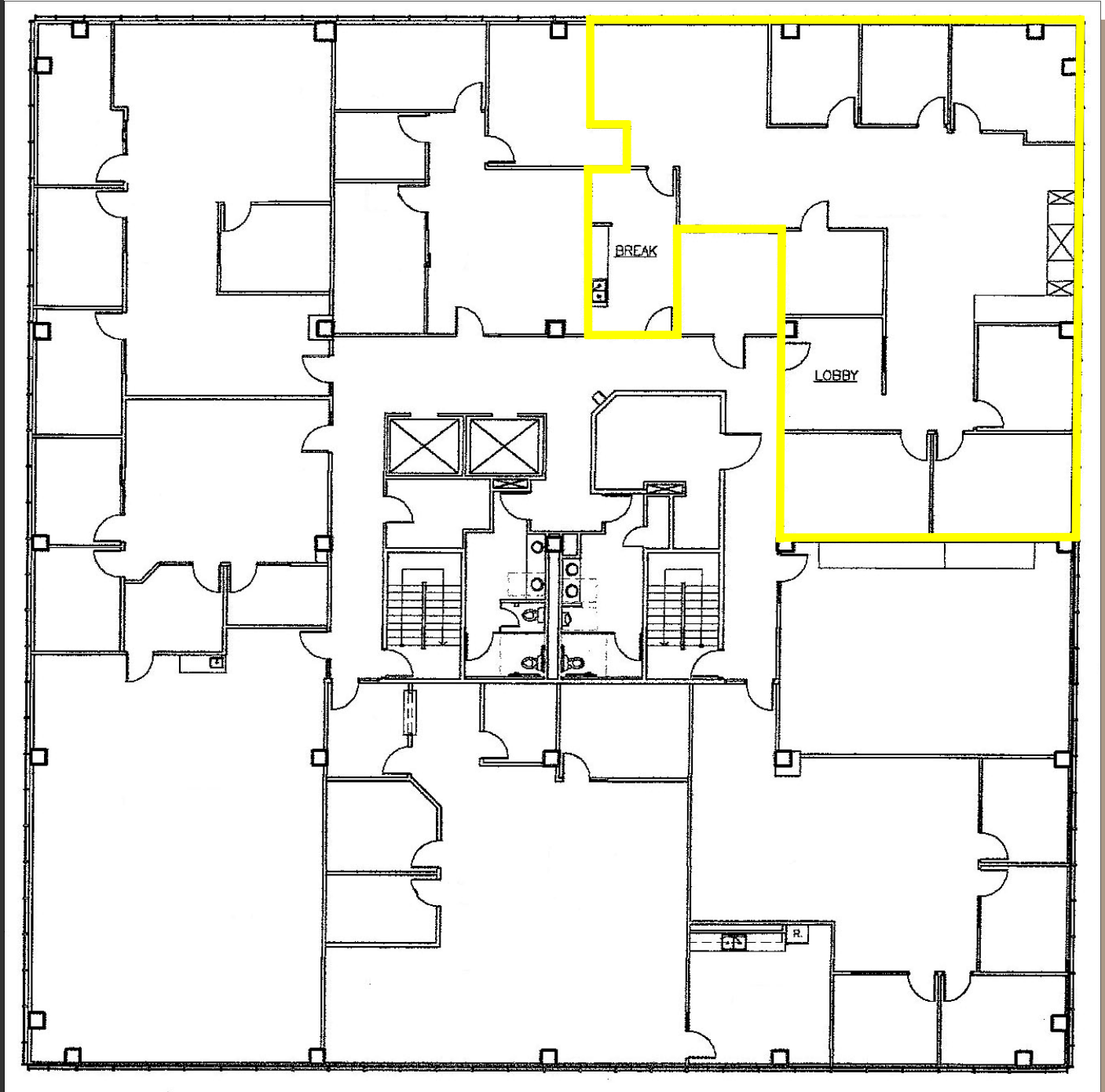


Exclusively Represented by:  
**Mike Gross**  
**Tucson Realty & Trust Co.**  
**520.577.7000**



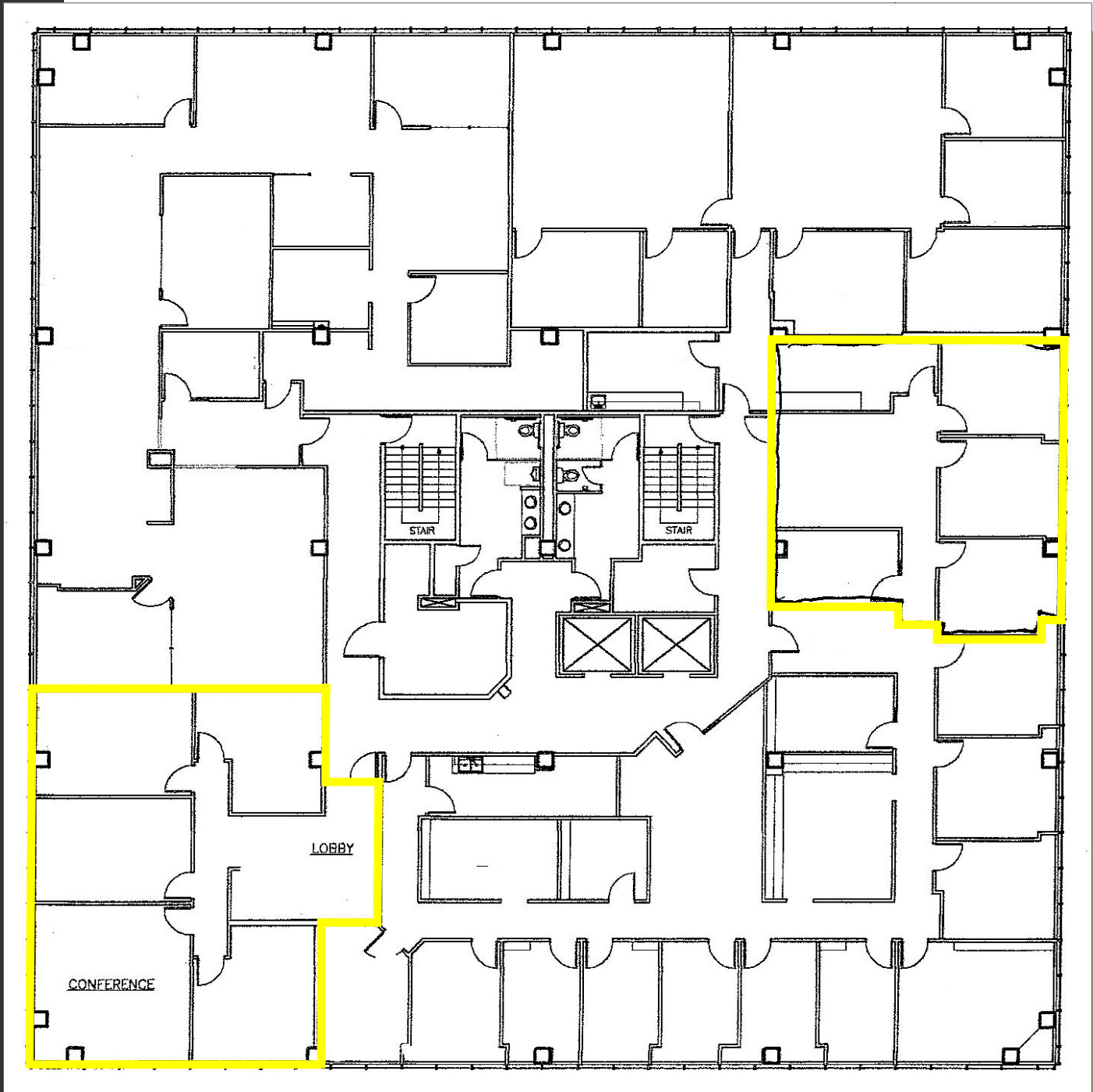
**333 N Wilmot**  
**Ground Floor**  
**7,526 rsf**  
**Available for Sublease**

Exclusively Represented by:  
**Mike Gross**  
**Tucson Realty & Trust Co.**  
**520.577.7000**



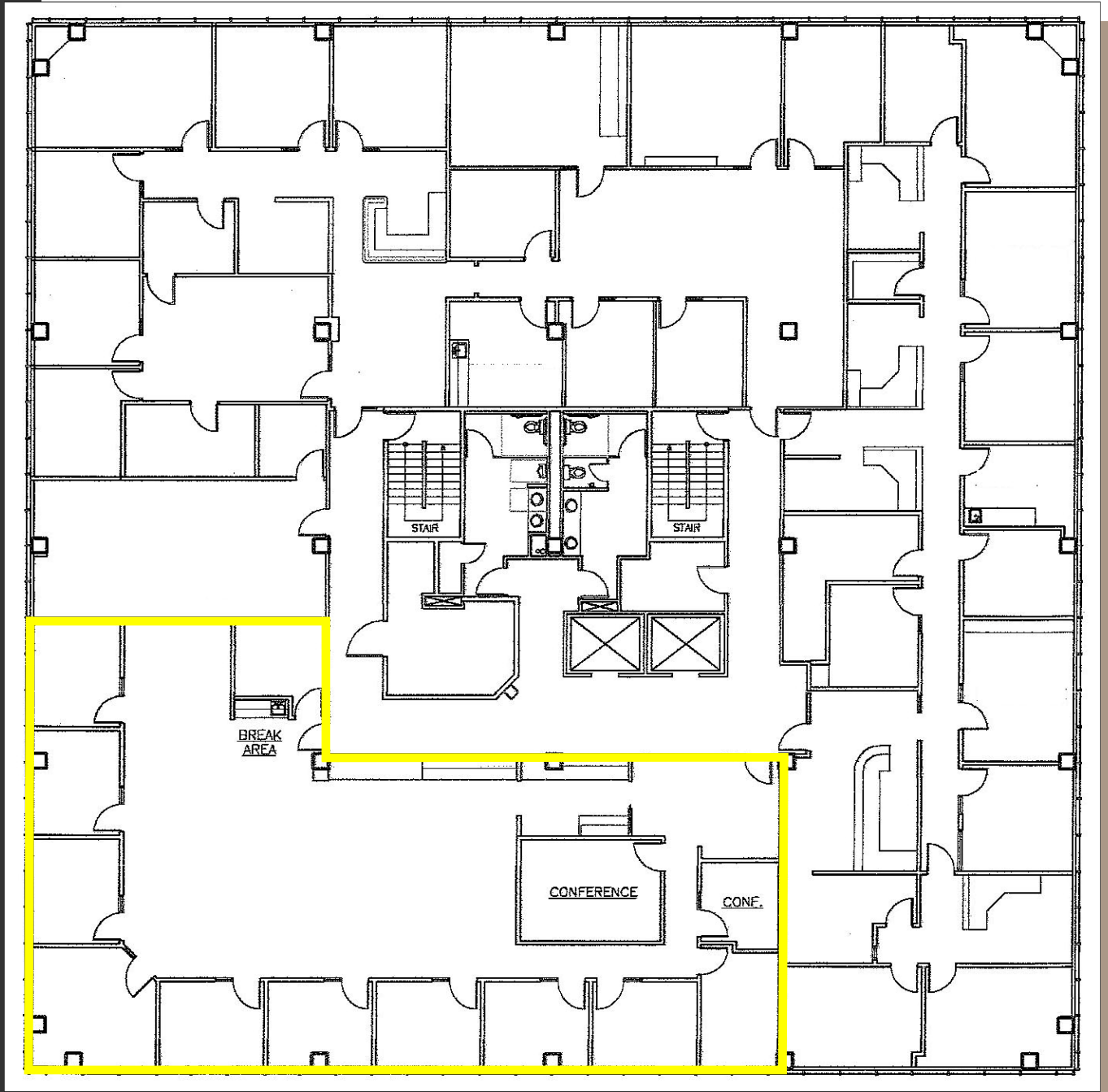
**333 N Wilmot**  
**Second Floor**  
**3,384 rsf**  
**Available for Lease**

Exclusively Represented by:  
**Mike Gross**  
**Tucson Realty & Trust Co.**  
**520.577.7000**



**335 N Wilmot**  
**Fourth Floor**  
**1,769 rsf**  
**Available for Lease**

Exclusively Represented by:  
**Mike Gross**  
**Tucson Realty & Trust Co.**  
**520.577.7000**



**335 N Wilmot**  
Fifth Floor  
3,994 rsf  
Available for Lease

Exclusively Represented by:  
**Mike Gross**  
**Tucson Realty & Trust Co.**  
**520.577.7000**