

Adjacent 12± acres also available



3634 W. Goret Road

- **PARCEL SIZE:** 6.83± Acres
- **TAX PARCEL:** 103-10-023H
103-10-023J
- **ZONING:** SR (Pima County)
- **UTILITIES:**
 - Sewer:** Septic
 - Electric:** TEP
 - Water:** Tucson

COMMENTS: 6.83± acres in the Tucson mountains. Close to shopping and minutes away from Grant and I-10. Great views from the property . Access is from Goret Drive. Excellent site for custom homes. County comprehensive plans allow several favorable rezoning alternatives.

Includes a 1121±sf rentable duplex.

\$325,000.00 (\$47,584±/acre)

Exclusively Represented by:
Howard Schwiebert
Tucson Realty & Trust Co.
520.577.7000

**F
O
R
S
A
L
E**



Established Neighborhood
Nearby

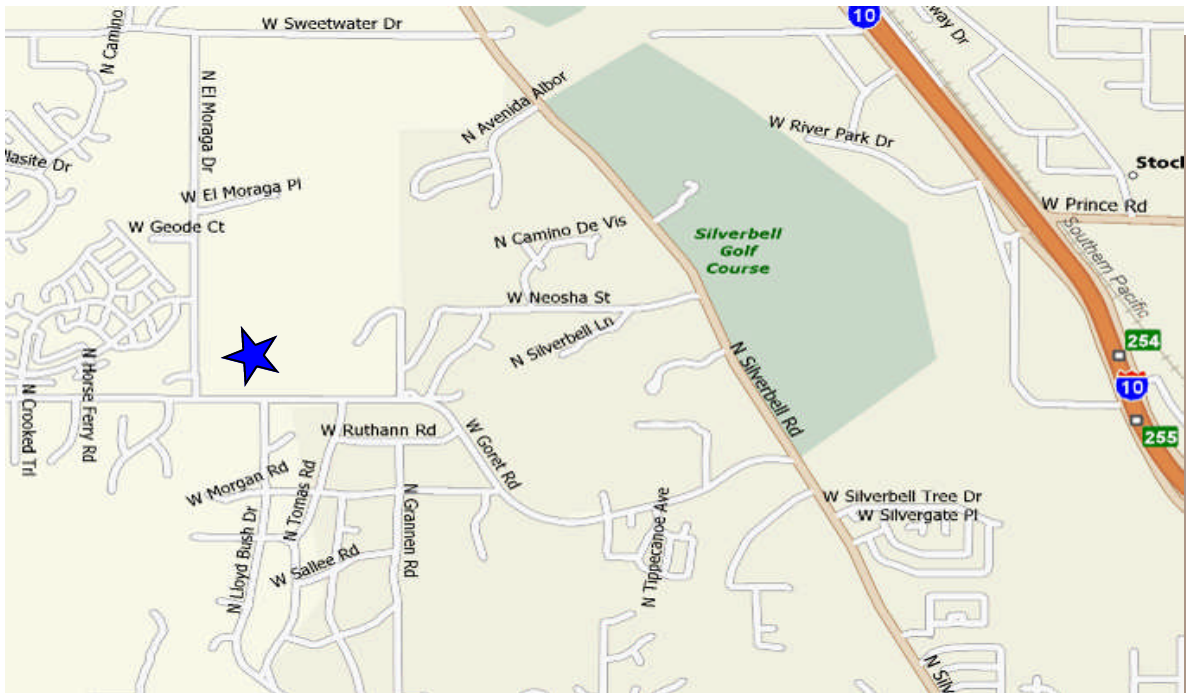
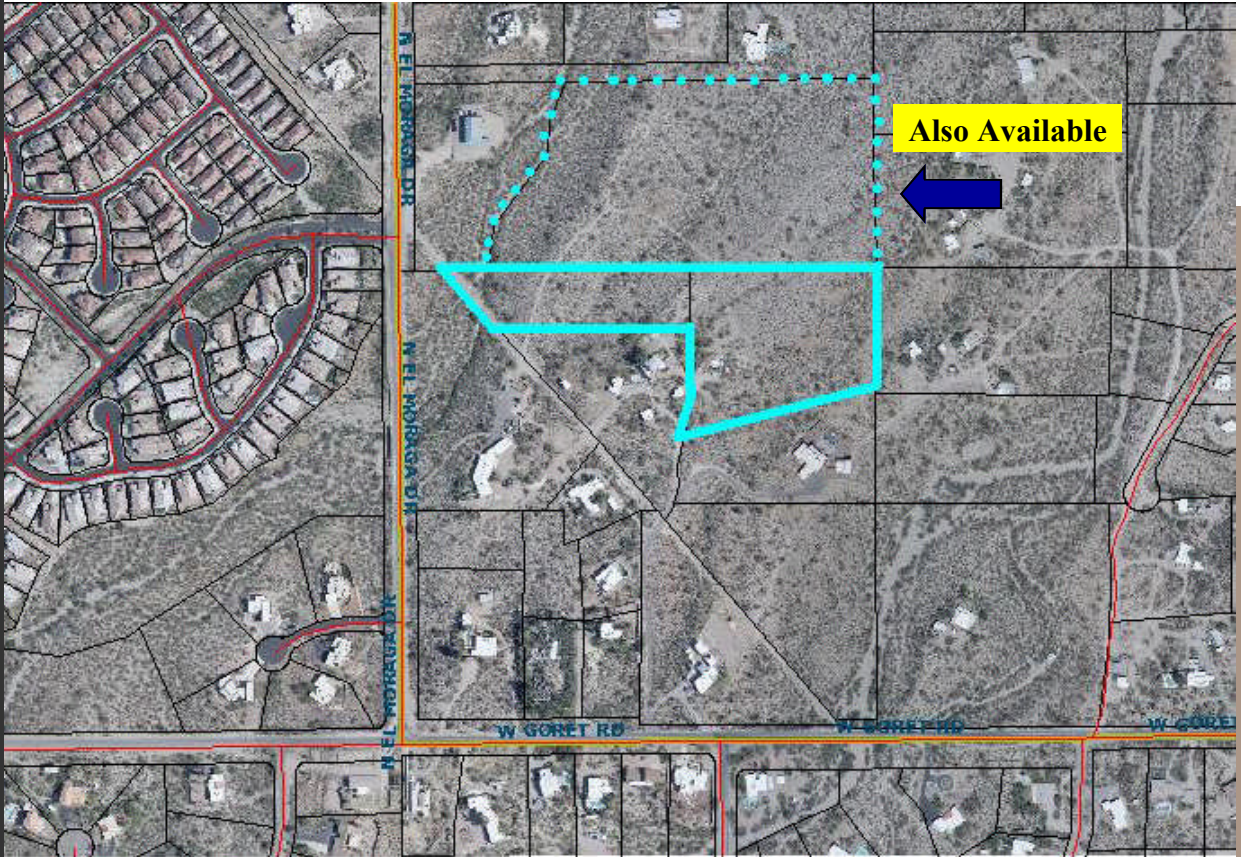


Custom Homes Adjacent to the Site



Access is from Goret Road on South Side of Property

Exclusively Represented by:
Howard Schwiebert
Tucson Realty & Trust Co.
520.577.7000



Exclusively Represented by:
Howard Schwiebert
Tucson Realty & Trust Co.
520.577.7000