

Adjacent 6.83± acres also available



3330± N. El Moraga Dr.

- **PARCEL SIZE:** 12± Acres
- **TAX PARCEL:** 103-10-0220
- **ZONING:** SR (Pima County)
- **UTILITIES:**
 - Sewer:** Septic
 - Electric:** TEP (El Moraga)
 - Water:** City of Tucson (El Moraga)

COMMENTS: 12± acres in the Tucson mountains. Close to shopping and minutes away from Grant and I-10. Two ridges offering great views cross the property . Access is from El Moraga Drive. Excellent site for custom homes. Can subdivide.

\$696,000.00 (\$58,000±/acre)

Exclusively Represented by:
Terry Lavery CCIM, CPM, GRI
Tucson Realty & Trust Co.
520.577.7000

**F
O
R
S
A
L
E**



Established Neighborhood
Nearby

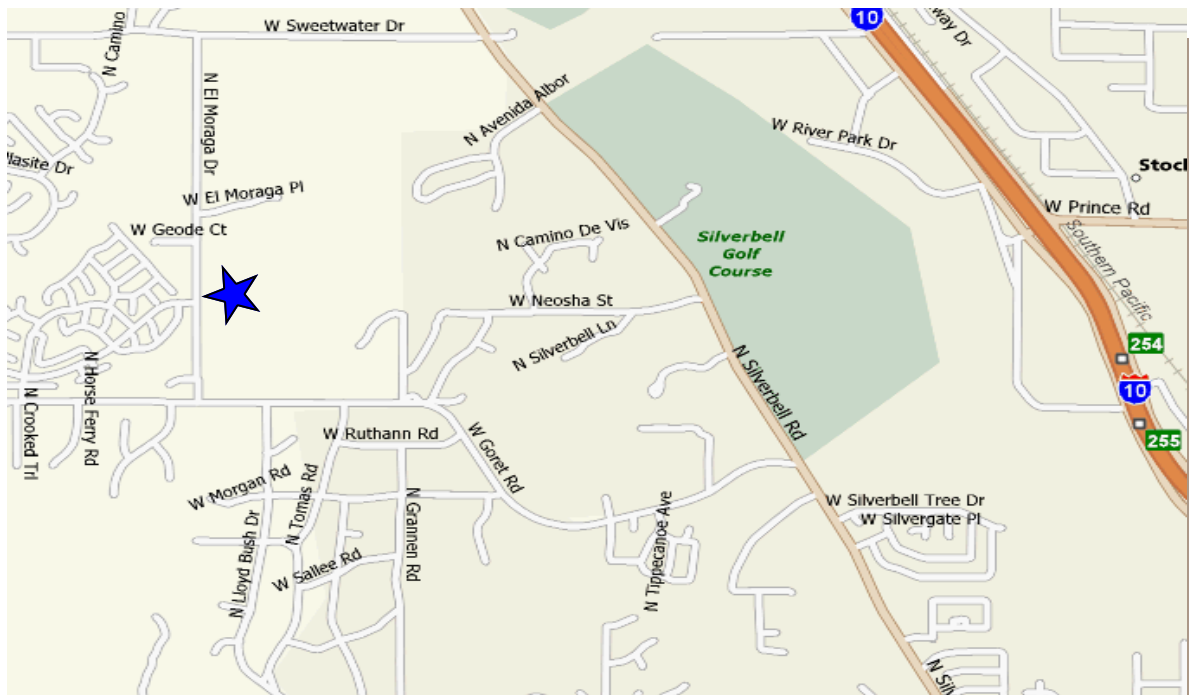
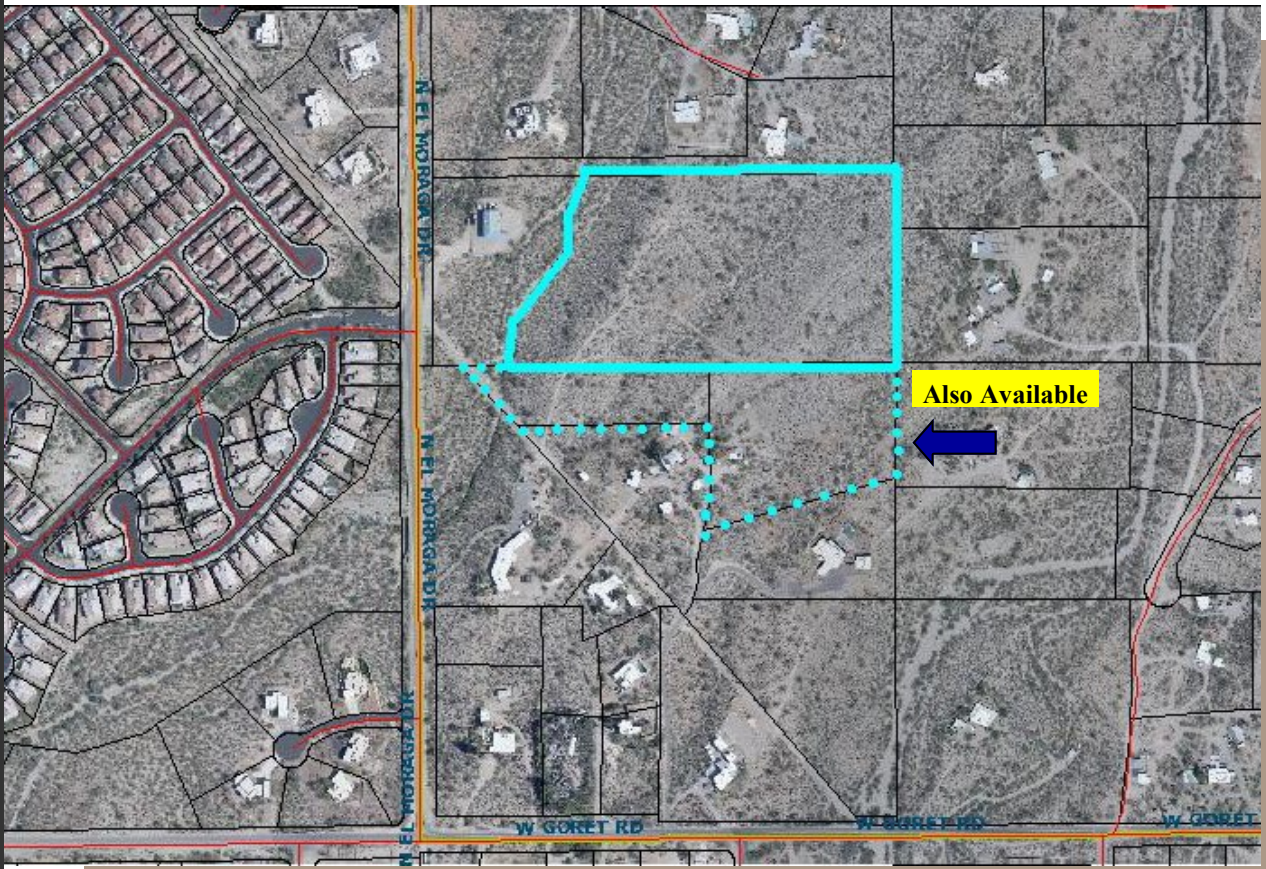


Custom Homes Adjacent to the Site



Access is from El Moraga on West Side of Property

Exclusively Represented by:
Terry Lavery CCIM, CPM, GRI
Tucson Realty & Trust Co.
520.577.7000



Exclusively Represented by:
Terry Lavery CCIM, CPM, GRI
Tucson Realty & Trust Co.
520.577.7000