

LEASE



## 333-335 N. Wilmot National Bank Plaza

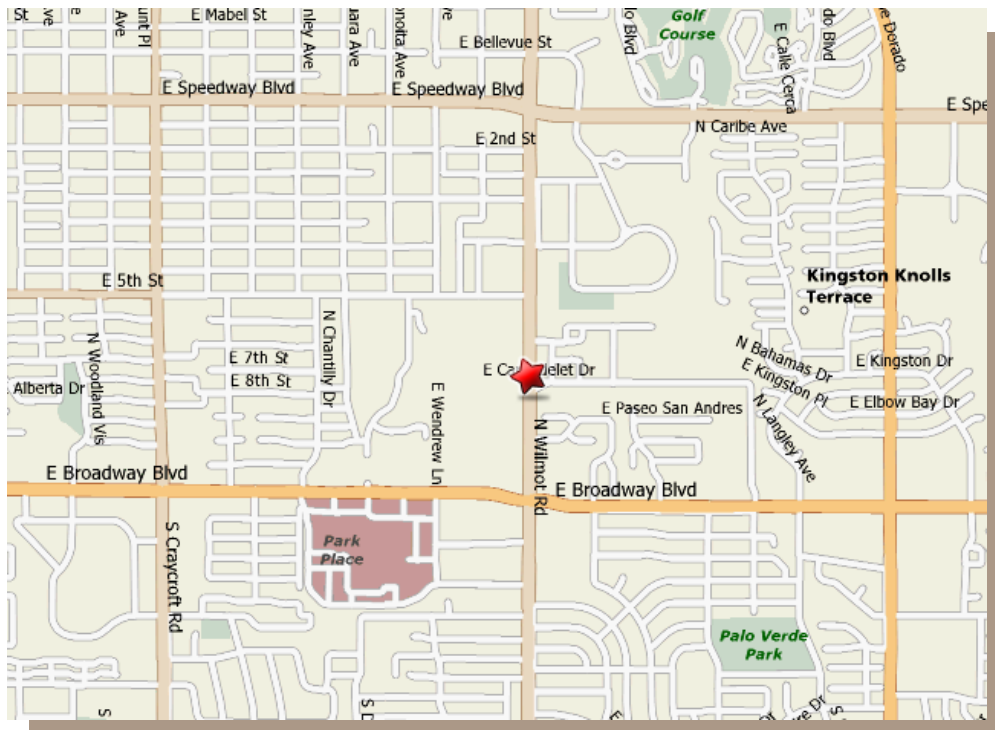
- **LOCATION:** Wilmot & Carondelet, between 5th Street and Broadway
- **TOTAL SIZE:** 129,000±sf
- **AVAILABLE SPACE:**

<u>333 N. Wilmot</u>	<u>335 N. Wilmot</u>
7,526 rsf—1st Floor	3,994 rsf - 5th Floor
	3,210 rsf - 4th Floor
	3,890 rsf - 4th Floor
- **NUMBER OF STORIES:**

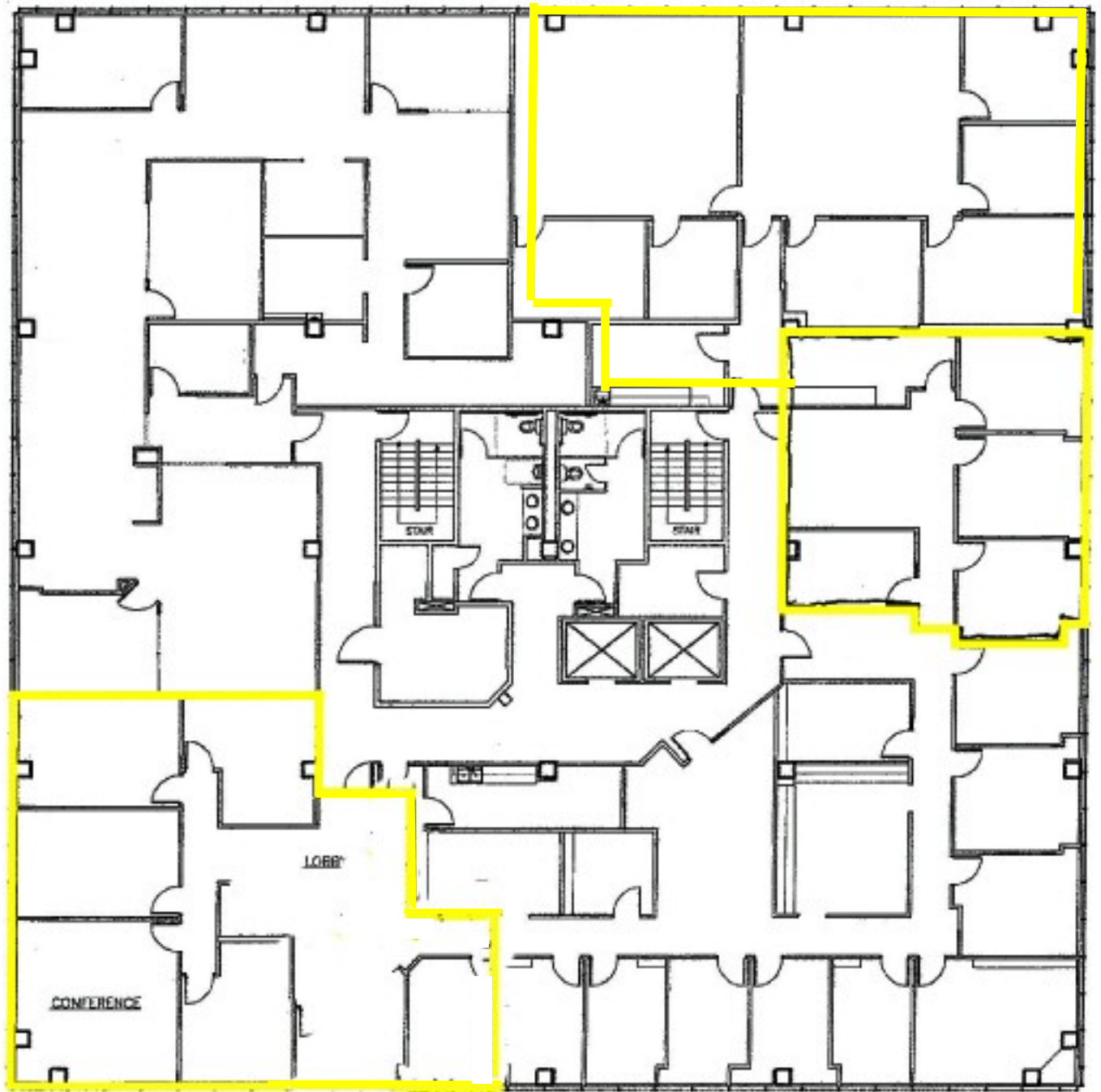
2 Buildings
333 - 4 Stories
335 - 6 Stories
- **PARKING:** 1:200
- **COMMENTS:** Top 10 Tucson Office Building. Near Park Place Mall and Dorado Golf Course. Great access and views. On lighted corner. In-house Property Management and Maintenance. Building totally renovated in 2009.

# \$19.50/rsf/Full Service

Exclusively Represented by:  
**Mike Gross**  
**Tucson Realty & Trust Co.**  
**520.577.7000**

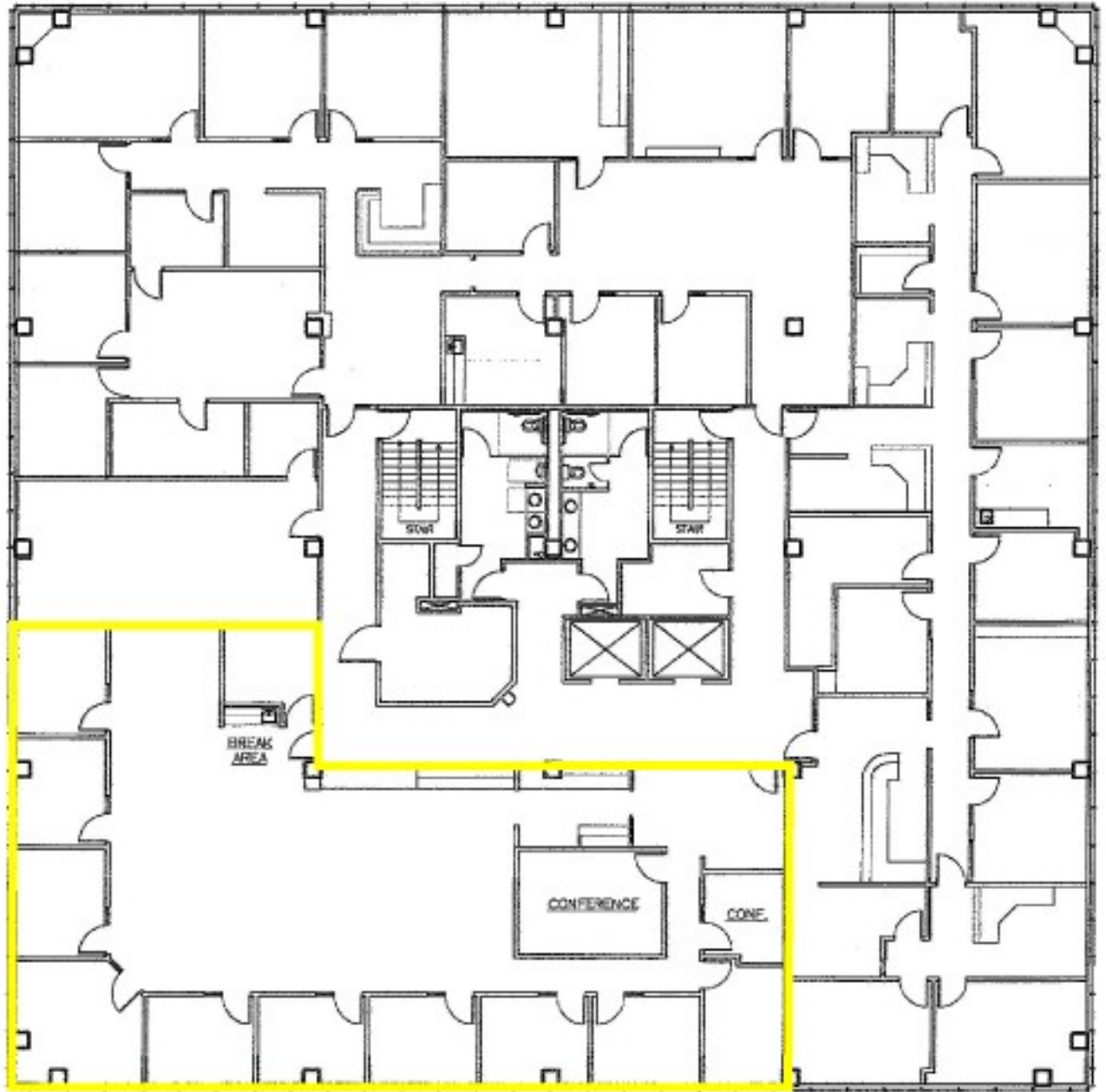


Exclusively Represented by:  
**Mike Gross**  
**Tucson Realty & Trust Co.**  
**520.577.7000**



**335 N. Wilmot**  
**Fourth Floor**  
**Available for**

Exclusively Represented by:  
**Mike Gross**  
**Tucson Realty & Trust Co.**  
**520.577.7000**



**335 N. Wilmot**  
**Fifth Floor**  
**3,994 rsf**  
**Available for Lease**

Exclusively Represented by:  
**Mike Gross**  
**Tucson Realty & Trust Co.**  
**520.577.7000**